

NARROW ELECTRIC ARTICULATING BOOM LIFTS ZA14NJE/ZA14NJE-Li

CE/ANSI/CSA Certified

HIGHLIGHTS

- ▶ Symmetric layout boom design, great structural rigidity, and small boom deflection
- ▶ Advanced dual control system (valve control + pump control) offers an energy-saving, smooth and efficient control
- ▶ Accurate and efficient traveling AC drive system provides strong power and stable control, motor maintenance-free
- ▶ Independent auxiliary power system for more secure application
- ▶ Large capacity tube battery + fast charger for longer battery life of 5 years and working time (ZA14NJE Only)
- ▶ Large-capacity lithium battery features long-lasting battery life of 8 years and 5-year warranty, the whole life cycle is maintenance-free (ZA14NJE-Li Only)
- ▶ Standard fast charger for short charging time of 7 hours (ZA14NJE-Li Only)
- ▶ Accurate and efficient traveling AC drive system provides strong power and stable control, motor maintenance-free

FEATURES

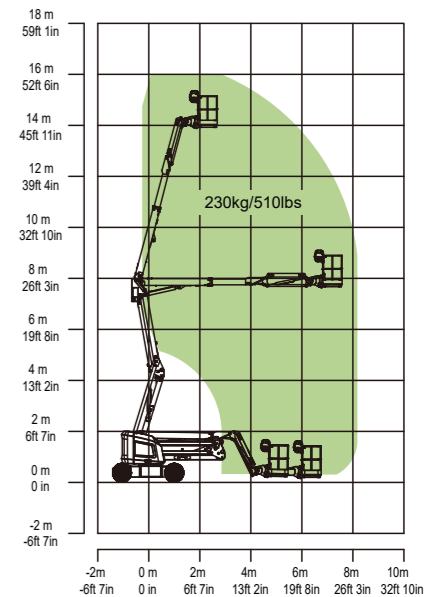
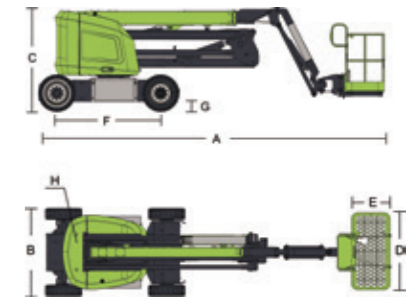
Standard Features

- Proportional control
- All motion alarm
- Flashing beacon
- Self-closing entry gate
- Emergency descent system
- Emergency stop button
- Auto-leveling system
- On-board diagnostic system
- Over tilt protection system
- Load sensing system
- 4.3' LED display
- Horn
- Anti-crushing device
- Fast charging (ZA14NJE-Li)
- Battery management system (ZA14NJE-Li)

Accessories & Options

- Platform light
- AC power to platform
- Airline to platform
- Non-marking tire

| Model | ZA14NJE | | ZA14NJE-Li | |
|--------------------------|---|--------------|---|--------------|
| | Imperial | Metric | Imperial | Metric |
| Size | | | | |
| Work Height | 52ft 6in | 16m | 52ft 6in | 16m |
| Platform Height | 45ft 11in | 14m | 45ft 11in | 14m |
| Horizontal Outreach | 26ft 8in | 8.14m | 26ft 8in | 8.14m |
| Up and Over Height | 25ft 5in | 7.74m | 25ft 5in | 7.74m |
| A - Stowed Length | 21ft 4in | 6.5m | 21ft 4in | 6.5m |
| B - Stowed Width | 5ft 9in | 1.75m | 5ft 9in | 1.75m |
| C - Stowed Height | 6ft 7in | 2m | 6ft 7in | 2m |
| D - Platform Length | 4ft 12in | 1.52m | 4ft 12in | 1.52m |
| E - Platform Width | 2ft 6in | 0.76m | 2ft 6in | 0.76m |
| F - Wheelbase | 6ft 9in | 2.05m | 6ft 9in | 2.05m |
| G - Ground Clearance | 8in | 0.20m | 8in | 0.20m |
| Performance | | | | |
| Platform Capacity | 510 lb | 230kg | 510 lb | 230kg |
| Drive Speed | 4 mph | 6.1km/h | 4 mph | 5.4km/h |
| Gradeability | 30% (17°) | | 30% (17°) | |
| Turning Radius (Inside) | 2ft 7in | 0.79m | 2ft 7in | 0.79m |
| Turning Radius (Outside) | 10ft 4in | 3.15m | 10ft 4in | 3.15m |
| Turntable Swing | 360° continuous | | 360° continuous | |
| Platform Rotation | ±90° | | ±90° | |
| H-Tail Swing | 0in | 0m | 0in | 0m |
| Max. Working Slope | 3/4° | 3/4° | 3/4° | 3/4° |
| Max. Wind Speed | 28mph | 12.5m/s | 28mph | 12.5m/s |
| Power | | | | |
| Battery | 2×24V/320Ah | | 48V/315Ah Li-ion battery | |
| Charger | 48V/35A | | 48V/60A | |
| Drive Motor | AC 32V/4hp | AC 32V/3.3kw | AC 32V/4hp | AC 32V/3.3kw |
| Lift Motor | AC 32V/10hp | AC 32V/7kw | AC 32V/10hp | AC 32V/7kw |
| Auxiliary Power | 12V DC Electrical pump | | 12V DC Electrical pump | |
| Hydraulic Tank Capacity | 7.9 (us gal) | 30L | 7.9 (us gal) | 30L |
| Tire | | | | |
| Type | 250-15 Solid tire 240/55D17.5 Foam-filled tire | | 250-15 Solid tire 240/55D17.5 Foam-filled tire | |
| Weight | | | | |
| Gross | 14770 lb | 6700kg | 14770 lb | 6700kg |



ACCESS WITH ZOOMLION GREEN