

# BE THE PARTNER OF *mateco*





# A KEY PLAYER IN THE CONSTRUCTION INDUSTRY

Mateco-Hungary Ltd. is proudly celebrating 25 years of existence, during which we have played a prominent role in the successful implementation of almost every major construction project.



Learn more about the innovative solutions provided by Mateco-Hungary Ltd., which can help you ensure the smooth development and growth of your business!

**Thank you for letting us join you on the road to the sky! Together we will rise even higher!**

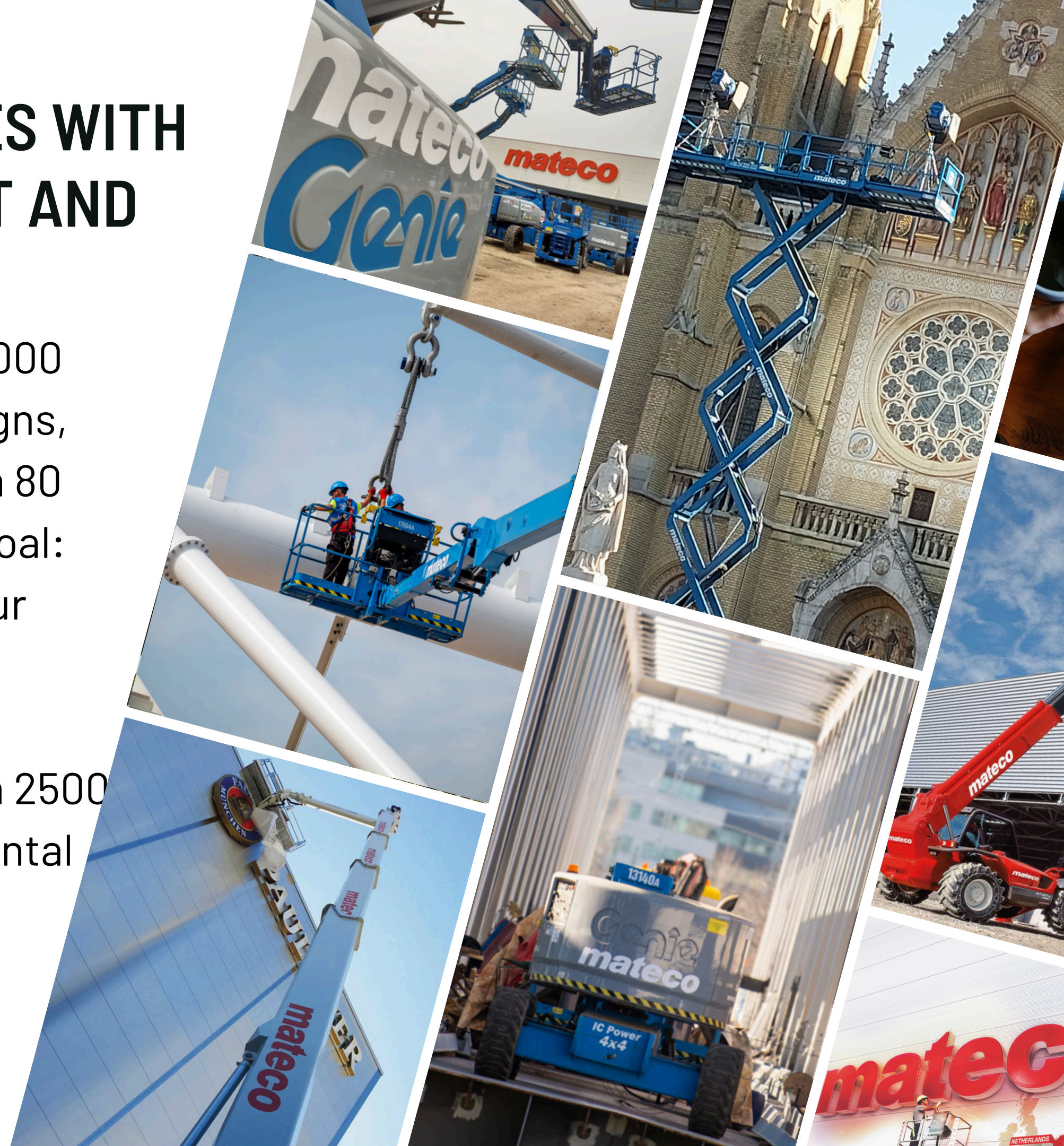


# WE OFFER HIGH-QUALITY MACHINES WITH MODERN CONSTRUCTION FOR RENT AND SALE

Mateco Group's rental fleet comprises over 40.000 work platforms in more than 700 different designs, with 150 own locations in Europe and more than 80 strong partners worldwide; we pursue a clear goal: supply the best height access technology for our customers.

In Hungary, Mateco-Hungary Kft. has more than 2500 lifting equipments and working platforms for rental regardless of the country border.

The average age of our machines is 3,5 years.





# REGION CENTERS

Web page: [www.mateco-hungary.hu](http://www.mateco-hungary.hu)  
Center: +36 24 222 222  
E-mail: [office@mateco-hungary.hu](mailto:office@mateco-hungary.hu)



---

*Szigetszentmiklós*

**Headquarters**

Szigetszentmiklós,  
Leshegy street 9/D  
2310



---

*Debrecen*

**Eastern Hungary Regional Center**

Debrecen,  
Nagy Mihály street 12.  
4002



---

*Győr*

**Western Hungary Regional Center**

Győr,  
Csonka János street 10.  
9027





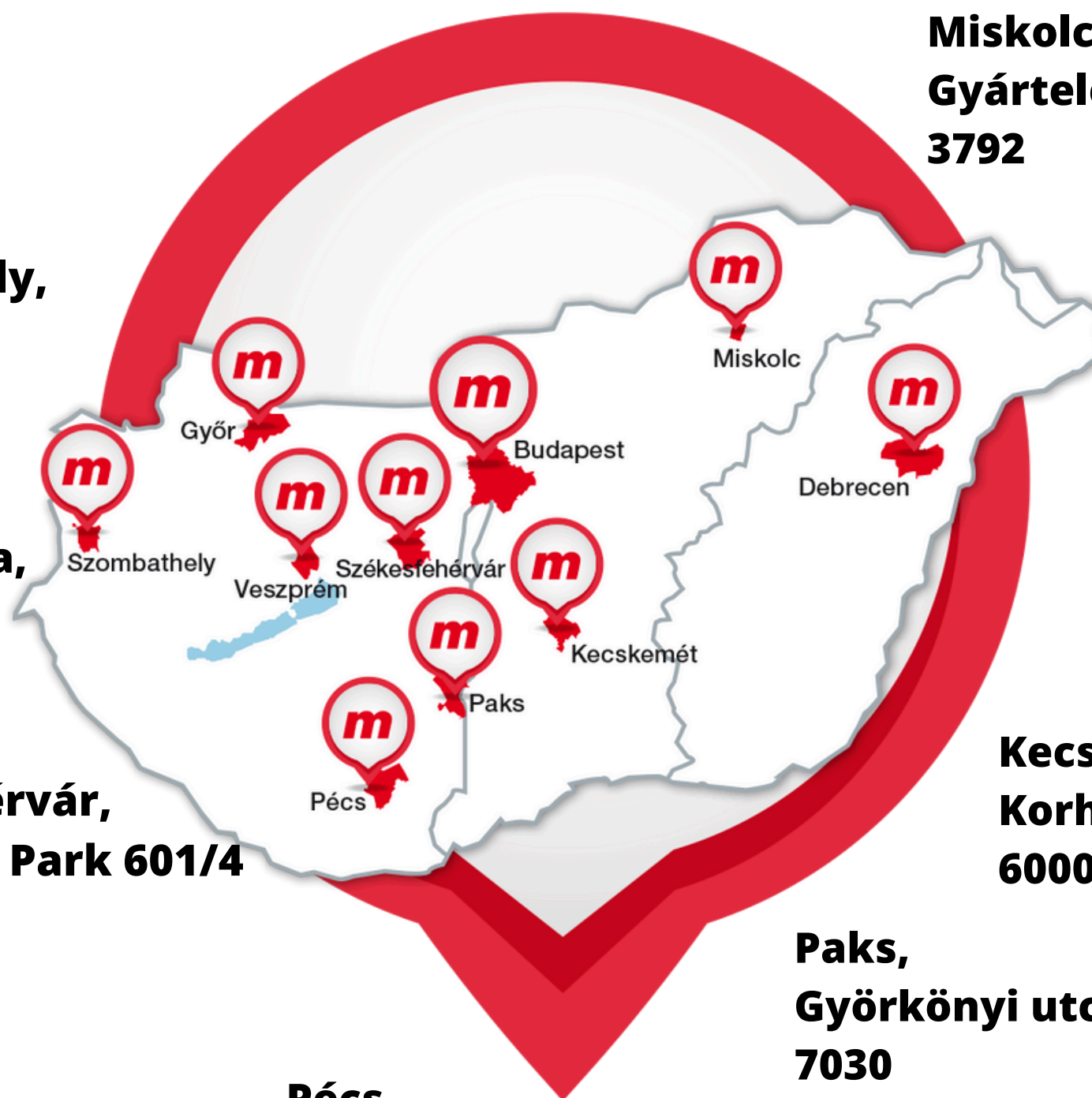
# DEPO AND SERVICE POINTS

**Miskolc-Sajóbábony,  
Gyártelep, hrsz: 024149  
3792**

**Szombathely,  
Sági út 4.  
9700**

**Veszprém-Kádárta,  
Jégvirág u. 1.  
8411**

**Székesfehérvár,  
Iszakai Ipari Park 601/4  
8000**



**Kecskemét,  
Korhánközi út 12.  
6000**

**Paks,  
Györkönyi utca, 0439 hrsz.  
7030**

**Pécs,  
Megyeri út 46-2.  
7623**



# MATECO STRUCTURE



## RENTAL & SALES

- Free on-site inspection and professional help inside Hungary based on your needs
- Incoming requests are processed within 1 hour



## TRANSPORTATION

- Punctual delivery on time
- Own truck fleet
- Flexible delivery periods (weekend delivery options if needed)



## SERVICE

- Nationwide service network, well-equipped services on our sites

## EXTRA SERVICES

ATTACHMENTS:  
Fork extensions,  
Winches,  
Jibs, hooks  
Baskets, buckets

EDUCATION:  
Lifting machine operator,  
Forklift driver,  
Cargo bandage/Crane  
binding

SPARE PARTS:  
Distributing and selling  
high-quality spare parts



# SALES

- **Free on-site inspection** and professional help inside Hungary based on your needs
- Incoming requests are processed within 1 hour
- **Special machines** available inside Mateco Group (extreme working height and capacity)
- Our fleet is **continuously expanding** with new working platforms
- If an order request is submitted before 15:00 – depending on the stock we have – **we provide the machine on the other day**
- The end of the rental period is the day announced in writing before 15:00
- Service with invoicing **5 days/week**
- Weekend work based on **GPS** details (we do not charge a rental fee under half an hour usage)
- Invoicing 2 times/month
- **Bank card payment** is available on the sites
- Payment terms based on individual agreement
- **No deposit** needed
- **Innovative** corporate management system for fast handling and solution of complex needs
- **Software-based customer support** by using MAP fleet for planning and online ordering interface





# SERVICE

- Nationwide **service network**, well-equipped services on our sites
- Professional repairment with high-quality spare parts of **Genie, Manitou, JLG, Still, Doosan** and other boom lifts, working platforms, forklifts, telehandlers throughout Hungary
- **Fast reaction time** after error report:
  - feedback within 1 hour
  - starting service process in 4 hours, helping from a distance
  - starting service process on the spot within 24 hours
  - providing replacement machine within 72 hours after announcing the error
- **Picture documented handover process** when taking the machine over
- Distributing and selling **high-quality spare parts**

## SERVICE FOR THIRD PARTY

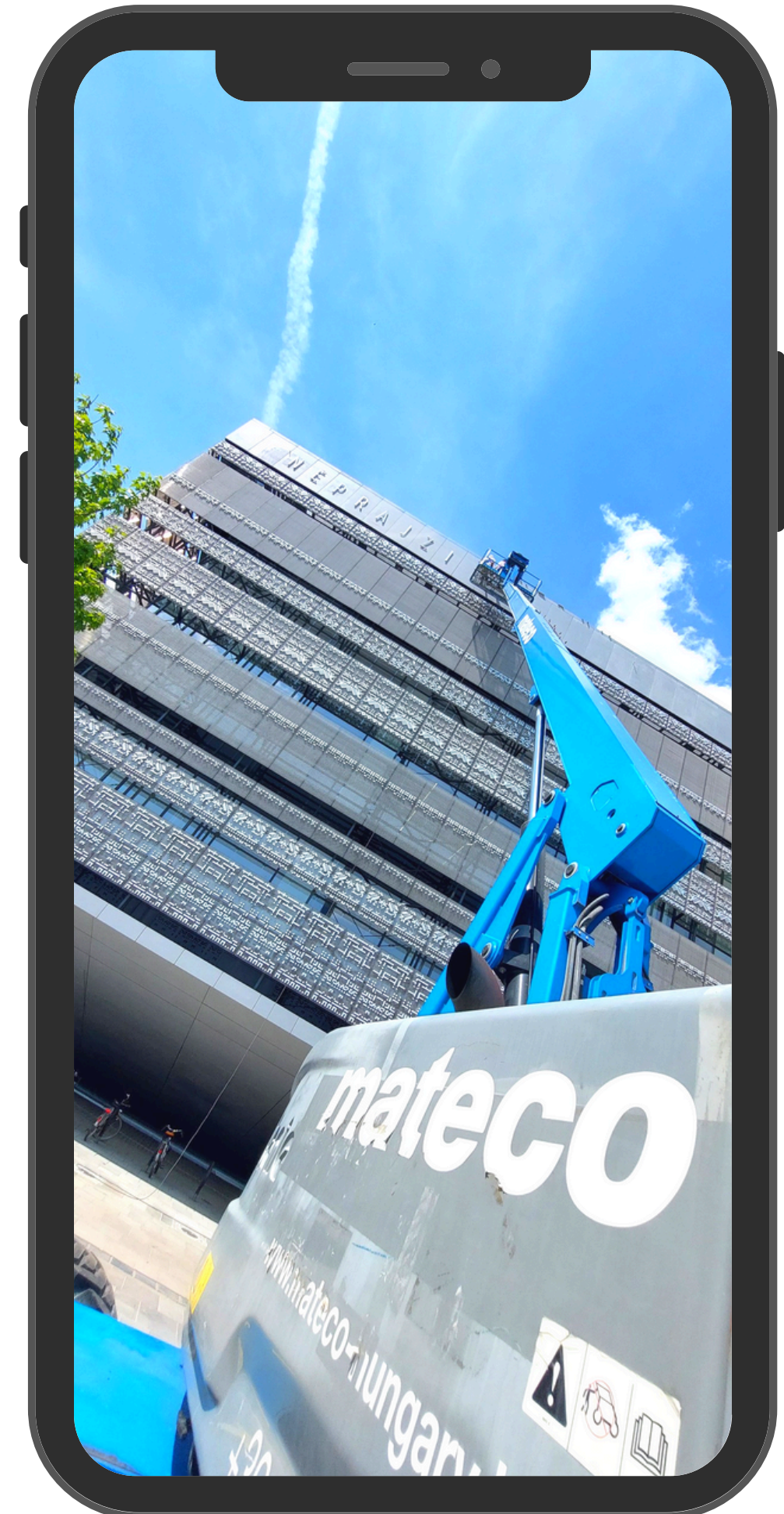
- Repairing process independently from the manufacturer, possibility to get all the technical specifications for all type of working platforms, forklifts, and telehandlers
- Predictable, transparent costs





# LOGISTICS

- **Punctual** delivery on time
- **Own** truck **fleet**
- **Flexible** delivery periods (weekend delivery options if needed)





# RECORDS

WITH OUR WORKING  
PLATFORMS, WE ACHIEVE  
HEIGHTS UP TO

**56**  
METER

LATERAL REACHES  
UP TO

**21**  
METER

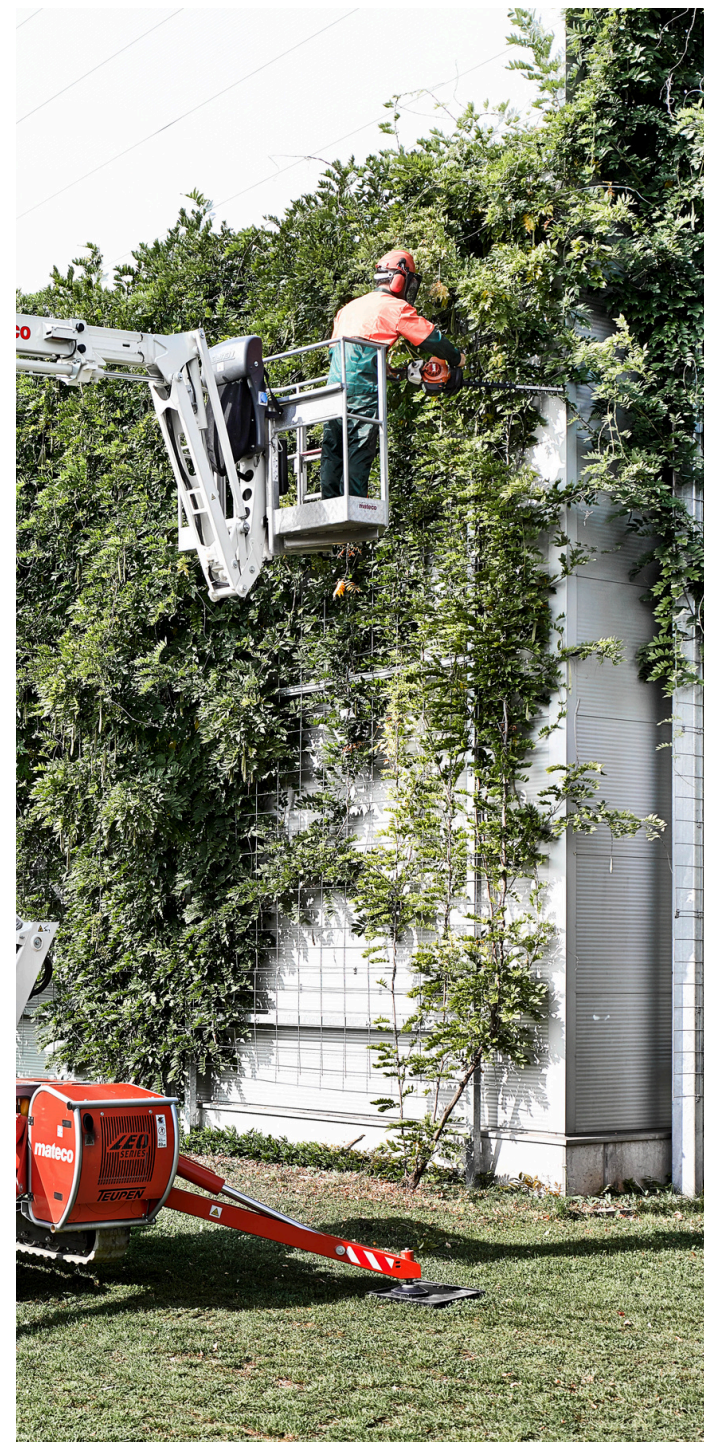
MAXIMUM LOAD  
CAPACITY

**16.000**  
KILOGRAM



# POTENTIAL FIELDS OF USAGE

- Building and construction
  - steel, concrete, industrial
- Logistics
  - warehousing, inventory
- Media and events
  - films, festivals, advertising
- Facility management
  - maintenance, cleaning, heating
- Telecommunication
  - installation, maintenance
- Security technologies
  - alarm, fire, noise, dust protection
- Public sector
- Forestry and gardening
  - construction, maintenance
- Residential use
- Energetics





# PRODUCT DATABASE

- Scissor lifts (industrial equipment)
- Telescopic boom lifts
- Articulated telescopic boom lifts
- Telescopic-mast working platforms
- Rotting telehandlers
- Fixed telehandlers
- Forklift trucks
- Trailer-mounted working platforms
- Self-propelled lifts
- Special working platforms
- Mini cranes





# SALES REPRESENTATIVES

**Ádám Szabó / +36 70 514 1378 / adam.szabo@mateco-hungary.hu**

Key Account Manager, national

**Gizella Király / +36 70 796 9219 / gizella.kiraly@mateco-hungary.hu**

National (Media and Events & Facility management)

**Attila Kocsis / +36 30 230 7339 / attila.kocsis@mateco-hungary.hu**

Győr-Moson-Sopron, Komárom-Esztergom, Veszprém, Zala county

**Bence Bánfi / +36 70 796 9231 / bence.banfi@mateco-hungary.hu**

Győr-Moson-Sopron, Komárom-Esztergom, Vas, Veszprém, Zala county

**György Sabján / +36 70 668 9500 / gyorgy.sabjan@mateco-hungary.hu**

Tolna, Baranya, Somogy county

**Gábor Kocsaslijszki / +36 70 643 7863 / gabor.kocsaslijszki@mateco-hungary.hu**

Budapest, Pest, Fejér, Nógrád county

**Hajnalka Szigyártó / +36 30 779 4204 / hajnalka.szigyarto@mateco-hungary.hu**

Hajdú-Bihar county

**Csaba Vitányi / +36 30 930 0543 / csaba.vitanyi@mateco-hungary**

Borsod-Abaúj-Zemplén, Szabolcs-Szatmár-Bereg, Heves county

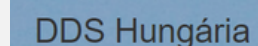
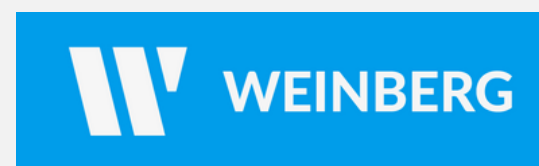
**Diána Koszti / +36 70 930 2119 / diana.koszt@mateco-hungary.hu**

Bács-Kiskun, Békés, Csongrád-Csanád, Jász-Nagykun-Szolnok county





# REFERENCES





WE HOPE YOU WILL  
ALSO BE OUR  
PARTNER SOON!

[www.mateco-hungary.hu](http://www.mateco-hungary.hu)



**mateco**

YOUR BETTER WAY UP